

MapSource

mapping software

© 2008 Garmin Ltd. or its subsidiaries

Garmin International, Inc.
1200 East 151st Street,
Olathe, Kansas 66062, USA
Tel. (913) 397.8200 or (800) 800.1020
Fax (913) 397.8282

Garmin (Europe) Ltd.
Liberty House
Hounslow Business Park,
Southampton, Hampshire, SO40 9RB UK
Tel. +44 (0) 870.8501241 (outside the UK)
0808 2380000 (within the UK)
Fax +44 (0) 870.8501251

Garmin Corporation
No. 68, Jangshu 2nd Road,
Shijr, Taipei County, Taiwan
Tel. 886/2.2642.9199
Fax 886/2.2642.9099

All rights reserved. Except as expressly provided herein, no part of this manual may be reproduced, copied, transmitted, disseminated, downloaded or stored in any storage medium, for any purpose without the express prior written consent of Garmin. Garmin hereby grants permission to download a single copy of this manual onto a hard drive or other electronic storage medium to be viewed and to print one copy of this manual or of any revision hereto, provided that such electronic or printed copy of this manual must contain the complete text of this copyright notice and provided further that any unauthorized commercial distribution of this manual or any revision hereto is strictly prohibited.

Information in this document is subject to change without notice. Garmin reserves the right to change or improve its products and to make changes in the content without obligation to notify any person or organization of such changes or improvements. Visit the Garmin Web site (www.garmin.com) for current updates and supplemental information concerning the use and operation of this and other Garmin products.

Garmin[®], BlueChart[®], MapSource[®], and iQue[®] are registered trademarks and Que[™] is a trademark of Garmin Ltd. or its subsidiaries, registered in the USA and other countries. These trademarks may not be used without the express permission of Garmin.

Google Earth[™] is a trademark of Google Inc.

Introduction	ii	Receiving Data from Your GPS Unit.....	15
Serial Number.....	ii	Creating and Editing Waypoints	16
Contact Garmin.....	ii	Creating Waypoints.....	16
Map Data Information	ii	Editing Waypoints.....	17
Installing MapSource	1	Finding Places	17
Unlocking Maps	1	Finding Nearest Places	
Unlock Codes and Coupon Codes	1	and Recently Found Places	18
Viewing Unlock Codes.....	3	Creating and Editing Routes	19
Retrieving Unlock Codes.....	4	Creating Routes	19
Registering Your Product.....	4	Editing Routes	20
Changing or Removing MapSource	5	Tracks	21
Repairing MapSource	5	Viewing Tracks.....	21
Modifying Coverage Areas.....	5	Filtering Tracks.....	22
Removing MapSource	6	Customizing MapSource	22
Connecting Your GPS Unit to a Computer	6	About Google Earth™	22
Using MapSource	8	Warnings and Cautions	23
Parts of MapSource	8	Index	24
Loading Maps to Your Garmin GPS Unit	9		
Selecting Maps	9		
Adding Maps from Multiple MapSource			
Products.....	11		
Transferring MapSource Data	12		
iQue® Users.....	12		
Sending Data to Your GPS Unit	14		

For additional instructions while you are using MapSource, click **Help > MapSource Help** or press **F1** on your keyboard to open the detailed MapSource Help files.

INTRODUCTION

Thank you for choosing Garmin® MapSource®—the complete tool for managing your Garmin GPS unit. MapSource provides detailed geographic data that you can view on your computer or load on your GPS unit. This manual has been provided to get you started. For detailed information about using MapSource, refer to the Help system.

Serial Number

Use this area to record the serial number (8-digit number located on the back of the box) in case your MapSource software needs support. Keep your original sales receipt in a safe place or attach a photocopy inside the manual.

Serial Number: _____

Contact Garmin

Contact Garmin if you have any questions or if you should encounter any difficulty while using MapSource.

In the U.S.A, contact Garmin Product Support by phone at 913/397.8200 or 800/800.1020, Monday–Friday, 8 AM–5 PM Central Time; or go to www.garmin.com/support.

In Europe, contact Garmin (Europe) Ltd. at +44 (0) 870.8501241 (outside the UK) or 0808 2380000 (within the UK).

Map Data Information

One of the goals of Garmin is to provide customers with the most complete and accurate cartography available to us at a reasonable cost. We use a combination of governmental and private data sources, which we identify in product literature and copyright messages displayed to the consumer. Virtually all data sources contain some inaccurate or incomplete data. In some countries, complete and accurate map information is either not available or is prohibitively expensive.

If the data source lacks a feature, or if an item is mislocated or misidentified, it will be incorrectly identified or missing in the Garmin cartography product as well. Each MapSource product has its strengths and weaknesses, and not all are suitable for every purpose. Please keep this in mind as you use and enjoy the benefits the cartography provides.

Garmin encourages you to report any errors found in our electronic maps by completing our online Error Reporting Form in the Cartography section of our Web site:

www.garmin.com/cartography/mapSource/errorForm.html.

INSTALLING MAPSOURCE

Unlocking Maps

Some MapSource products need to be unlocked before you can use the detailed map data. If your product needs to be unlocked, you will find a piece of paper in the product packaging with an Unlock Code or a Coupon Code.

The first time you run MapSource with locked maps installed, the Locked Maps Detected dialog box will prompt you to unlock your maps. You can also unlock your maps from within MapSource. Click **Utilities > Manage Map Products**.

Unlock Codes and Coupon Codes

An **Unlock Code** is 25 characters and is printed on a yellow piece of paper or on the product packaging. It unlocks all maps associated with your MapSource product. The yellow paper also includes a serial number and a 7-digit Registration Code. Unlock Codes are included with Garmin devices that also include mapping software. To unlock your product with a 25-Character Unlock Code, see [page 2](#).

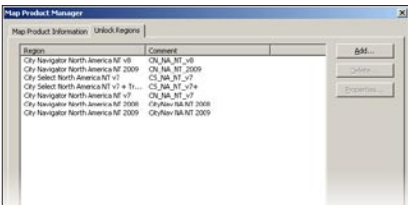
A **Coupon Code** is 8 characters and is printed on the *Unlock Certificate*. It unlocks a map region of your MapSource product. Coupon Codes are included with software that is packaged separately from a Garmin device. To unlock your product with an 8-character Coupon Code, see [page 2](#).



NOTE: Keep your Unlock Code or Coupon Code in a safe place. You may need this information if you reinstall MapSource. Garmin cannot give refunds or exchanges for MapSource Unlock Codes.

To unlock your product with a 25-Character Unlock Code:

1. In MapSource, click **Utilities > Manage Map Products**.
2. Select the **Unlock Regions** tab, and click **Add**.



Unlock Regions Tab

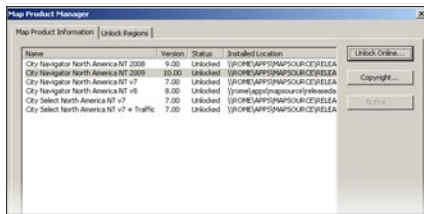
3. Enter your 25-character unlock code and then a comment, if desired. Click **OK**.

To unlock your product with an 8-character Coupon Code:



NOTE: An Internet connection is required for the following procedure.

1. In MapSource, click **Utilities > Manage Map Products**.
2. Select a map product from the list, and click **Unlock Online**. The Unlock Maps page loads in your Web browser.



Unlock Online

3. If the Garmin Communicator Plugin is not installed on your computer, follow the instructions on the Unlock Maps page to install the Garmin Communicator Plugin.

4. Connect your GPS unit to your computer. For more information, see [page 6](#) or consult the owner's manual for your GPS unit.
5. Click **Find Devices**. Select your device from the drop-down list, if necessary. The Unit ID of your device appears in the Unit ID field.
6. Enter the serial number found on your device.
7. Enter the 8-character Coupon Code found on your Unlock Certificate. Click **Unlock Map**. You can now close the Map Product Manager and use MapSource.

Viewing Unlock Codes

If you ever need to view your Unlock Code, you can do so using the Map Product Manager.

To view your installed Unlock Codes:

1. In MapSource, click **Utilities > Manage Map Products**.
2. Select the **Unlock Regions** tab.
3. The Map Product Manager displays a list of all of the installed MapSource products.

To view the Unlock Code for a product, select the product, and click **Properties**.

To delete an Unlock Code for a product, select the product, and click **Delete**.

Retrieving Unlock Codes

You can retrieve Unlock Codes from Garmin by providing the unit ID and serial number of your device.



NOTE: An Internet connection is required for the following procedure.

1. In MapSource, click **Utilities > Manage Map Products**.
2. Select a map product from the list, and click **Unlock Online**.
3. If the Garmin Communicator Plugin is not installed on your computer, follow the instructions on the Unlock Maps page to install the Garmin Communicator Plugin.
4. Connect your GPS unit to your computer. For more information, see [page 6](#) or consult the owner's manual for your GPS unit.
5. Click **Find Devices**. Select your device from the drop-down list, if necessary. The Unit ID of your device appears in the Unit ID field.
6. Enter the serial number found on your device.

7. Click **Retrieve Unlocks**. Your unlock codes are restored to MapSource.

Registering Your Product

You can register your product on Garmin's Web site at <http://my.garmin.com>.

We highly recommend that you register your MapSource product to gain important benefits:

- You can be notified of product updates as they occur.
- You have proof of purchase on file with Garmin in case your product needs service.
- You have access to reduced-rate mapping data updates.

Changing or Removing MapSource

You can repair MapSource if it becomes corrupted. For some MapSource products, you can modify the regional coverage area. You can also remove any MapSource product from your computer.

Repairing MapSource

In some MapSource products, you can repair MapSource if it becomes corrupt. If this option is not available, you can uninstall and reinstall the product.



NOTE: You need your MapSource installation disks to repair MapSource.

To repair MapSource:

1. Insert the MapSource installation disk into your computer disk drive. The installation wizard opens. Click **Next**.
2. Select **Repair** and click **Next**.
3. Follow the additional instructions to repair MapSource.

Modifying Coverage Areas

Some MapSource detailed map products allow you to modify the regional coverage areas. If your MapSource product allows this, **Modify** appears as an option when you open the MapSource installation wizard.



NOTE: You need your MapSource installation disks to modify MapSource.

To add or remove specific coverage areas:

1. Insert the MapSource installation disk into your computer disk drive. The installation wizard opens. Click **Next**.
2. Select **Modify** and click **Next**.
3. Select the areas you want to add or remove. Click **Next**.
4. Follow the additional instructions to modify MapSource.

Removing MapSource

You can remove any MapSource product from your computer without using the MapSource installation disks.

To remove MapSource:

1. Click the **Start** button. Then select **Settings > Control Panel**.
2. Select **Add/Remove Programs**.
3. Highlight **MapSource** and click **Change/Remove**.
4. Follow the instructions to remove MapSource.

OR

1. Click the **Start** button. Then select **Programs > MapSource > MapSource product Installation Wizard** (if enabled).
2. Click **Next**.
3. Select **Remove**.



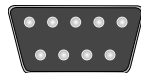
NOTE: To completely remove MapSource, you must also delete the C:\Garmin\USB_Drivers directory from your computer.

Connecting Your GPS Unit to a Computer

Install your MapSource software or run the installation disk for your product before you connect your GPS unit to your computer. If your MapSource product came with a setup guide, follow those instructions to learn how and when to connect your GPS unit to your computer. You can also find this information in your GPS unit owner's manual.

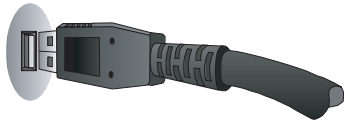
To connect your GPS unit to your computer:

1. If your GPS unit came with a PC Interface Cable, connect your GPS to a serial communications port on your computer (see illustration below).



Serial Communications Port

If your GPS unit came with a USB data cable, connect your GPS to an available USB data port.



USB Data Port

2. Verify that your GPS is turned on and the Serial Data Format is set to **Garmin**, if applicable.

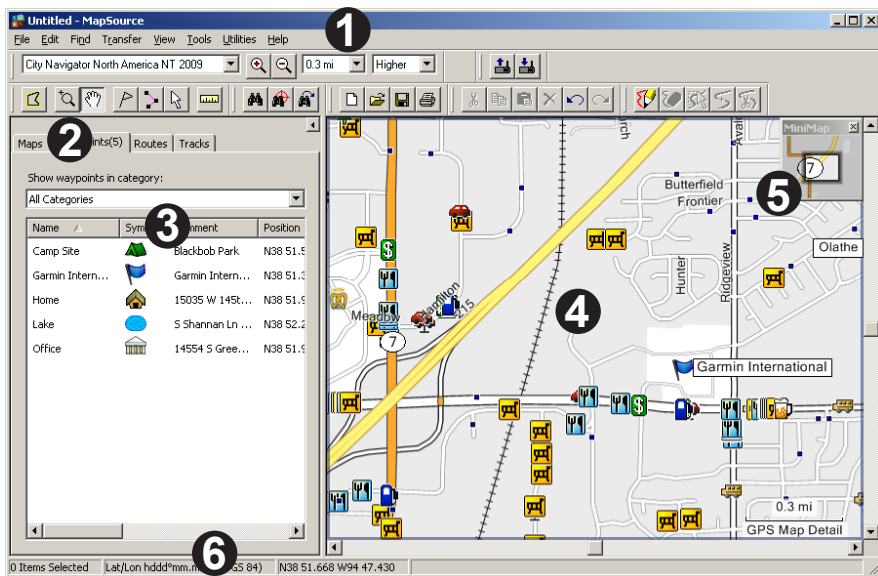
To verify proper connection to the computer:

1. In MapSource, click **Utilities > Get Unit ID**.
2. Verify that the name of your GPS unit appears in the **Device** field. If not, your GPS unit may not be connected properly. Verify that the unit is turned on, check the connection, and then click **Find Device**.

USING MAPSOURCE

Parts of MapSource

The MapSource window contains five main parts: the (1) toolbars, (2) data tabs, (3) splitter bar, (4) Graphic Map, (5) MiniMap, and (6) status bar.



Loading Maps to Your Garmin GPS Unit

You can load maps to your Garmin GPS in three simple steps:


- Connect your Garmin GPS unit to your computer.
- Select the maps you want to send to your GPS unit.
- Transfer the maps to your GPS unit.

For help connecting your GPS unit to your computer, see [page 6](#) or consult the owner's manual for your GPS unit. To select maps and send them to your GPS unit, see the next two sections, "Selecting Maps" and "[Transferring MapSource Data.](#)" You may also be able to view a tutorial on your MapSource installation disk about selecting and sending maps. The tutorial is also available online at www.garmin.com/cartography/mapsourcetutorial.html.



NOTE: Not all Garmin GPS units can use detailed maps. Check your GPS unit owner's manual to see if your unit is compatible.


Selecting Maps

Use the **Map** tool  to select the map regions you want to send to your GPS unit.



NOTE: To select map regions, you must unlock your MapSource product. For more information, see [page 1](#).

To select map regions:

1. Zoom to an appropriate distance on the Zoom scale (usually 30-70 miles or 50-100 km).
2. Click the **Map** tool  or click **Tools > Map**. Move the mouse over the Graphic Map. Each map region becomes outlined in yellow when you move over it with the mouse. The name and size of the map region appear in the status bar.
3. Click a map region to select it. To select several map regions at once, click and drag the mouse over the areas you want to select. Selected map regions are shaded pink.

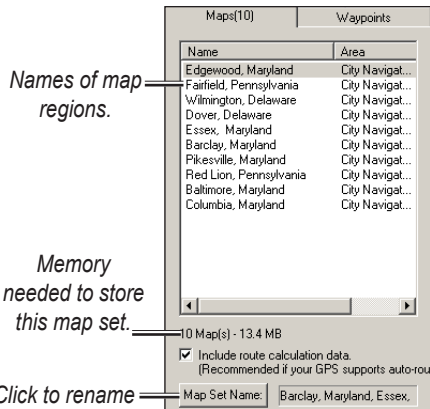


Selected map regions appear shaded in pink.
BlueChart® map regions appear outlined in pink.

- To deselect a map region, click a shaded pink area on the Graphic Map. To deselect several map regions, press and hold the **Ctrl** key while you click and drag across the map regions you want to deselect.

The map regions you select are called a “map set” and are listed in the Maps tab. Click the **Maps** tab to view the names and sizes of each map region you have selected.

Check the amount of memory your GPS unit has to store map data. Then check the Maps tab to see how much memory your map set requires. If the map set is too big, deselect some map regions.



Names of map regions.

Memory needed to store this map set.

Click to rename map set.

Maps Tab



NOTE: If your GPS unit supports auto-routing, select the **Include route calculation data** check box (located at the bottom of the Maps tab).

You can create a route in MapSource and then select all of the map regions surrounding that route. You can also select maps around waypoints or tracks. For more information about creating routes, see [page 19](#).

To select maps around waypoints, routes, or tracks:

Right-click a route, waypoint, or track in its Data tab and click **Select Maps Around Route (Waypoint/Track)** from the shortcut menu.



NOTE: Some MapSource products sell area maps separately. You can only select maps that you have purchased and installed on your computer.

Adding Maps from Multiple MapSource Products

If you have purchased and unlocked multiple MapSource products, you can add maps from more than one MapSource product to a map set. You can only see data from one product on your GPS unit if the maps overlap. The maps are not transparent on the unit and cannot be combined.

If two maps from different MapSource products overlap on your GPS unit, you need to turn the overlapping map off in order to see the other map underneath. Check your GPS unit owner's manual to learn how to turn MapSource maps on or off.

For example, if you select both Topographical and City Navigator data for the same geographical area, you will not see a combination of topographic and road data. You will only see data from the City Navigator data set. In order to see the Topographical data, hide the City Navigator data in your GPS unit.

Transferring MapSource Data

You can send map sets, waypoints, routes, and tracks to your GPS unit or storage card, or you can receive data from your GPS unit or storage card. You may use one of the following methods to transfer data to or from your GPS unit (check your GPS unit owner's manual to see what data transfer options are available):

- **Serial or USB Cable**
- **USB Data Card Programmer or USB Data Card Programmer RoHS (USB 2.0)**—You can use this method if your GPS unit uses a Garmin data card (not preprogrammed). The USB Data Card Programmer RoHS works with Windows 2000 or newer.
- **Compact Flash (CF) or Secure Digital (SD) Card Reader**—If your GPS unit uses a CF, SD, micro SD, or transflash card, you can purchase a third-party card reader to transfer data. In some instances, you cannot transfer waypoints, routes, or tracks using a card reader.

Each time you transfer maps to a data card, you completely erase all data currently stored on the card and replace it with new data. However, if you store maps on a data card and you transfer waypoints, routes, or tracks, you will not erase the maps on the card.

You can transfer waypoints, routes, and tracks from a data card to your GPS unit's internal memory to prevent them from being deleted from your data card. You cannot save maps from a data card to your GPS unit's internal memory.



NOTE: Not all units can accept waypoints, routes, or tracks from a data card. Check your GPS unit owner's manual to see if your unit is compatible.

iQue® Users

To transfer data to and from an iQue, you may need to synchronize with your personal computer. You may not be able to send or receive all types of data to/from your iQue. For more information, refer to your iQue owner's manual.

BlueChart, Fishing Hot Spots, and LakeMaster Data Cards

Preprogrammed BlueChart, BlueChart g2, Inland Lakes, Fishing HotSpots, Recreational Lakes with Fishing HotSpots, and LakeMaster data cards should not be used in the USB Programmer or in a GPS unit for saving MapSource maps—you will lose the preloaded data. Remove this preprogrammed data card from your GPS unit before you transfer maps, routes, waypoints, or tracks. MapSource warns you if you are in danger of erasing data. If you overwrite the preloaded data, Garmin will not replace or recover it.

Reloading the POI Database

If your GPS unit includes a preloaded/preprogrammed Points of Interest (POI) database, you will see a warning about erasing this preloaded data before you save MapSource maps. This warning does not refer to the basemap of your unit. You can restore the preloaded data to your GPS unit by downloading it from the Garmin Web site.

To reload Points of Interest:

1. Go to <http://www.garmin.com>.
2. Select **Support > Updates & Downloads**.
3. Click **Additional Software**.
4. Click the name of your GPS unit.
5. Under **Unit Software**, click **Download**.
6. Click to agree to the terms of the Software License Agreement.
7. Under **Download Preloaded POI Database**, click **Download**.

Any MapSource maps on your GPS unit will be erased and replaced with the POI database.

Sending Data to Your GPS Unit


If your GPS unit has a storage card, verify that the card is inserted correctly into the unit. Also, connect your GPS unit to your computer and set your unit's Data Transfer mode to **Garmin**, if applicable (see your unit owner's manual for instructions).

You can send maps, waypoints, routes, or tracks to your GPS unit.



NOTE: MapSource transfers all of the data listed in a data tab to your GPS unit each time you transfer data.

To send data to a GPS unit or card reader:

1. Verify that the data you want to send appears in the corresponding data tabs on the left side of the MapSource window.
2. Click **Send To Device**  or click **Transfer > Send To Device...** The name of your GPS unit or card reader should appear automatically in the Device menu. If not, click **Find Device**.


- If you are using a USB card programmer, “USB Data Card Programmer” appears in the **Device** field.
 - If you are using a CF or SD card reader, select the correct drive letter from the **Device** field. For example, select “Removable Disk (E:).”
 - If you are sending data to an iQue or cf Que, select where you want to save data under **Map Storage Location**. If necessary, select the correct user name from the **Device** fields.
3. Under **What to Send**, check the boxes next to each type of data you want to send.
 4. Click **Send**. MapSource begins sending data to your GPS unit or card reader. After you begin transferring data, you can check the box next to **Turn Off GPS After Transfer**, if available.
 5. If you are using an iQue or cf Que, synchronize with your personal computer, if necessary, so that your unit receives the data.

Receiving Data from Your GPS Unit

If your GPS unit has a storage card, verify that the card is inserted correctly into the unit. Also, connect your GPS unit or card reader to your computer and set your unit's Data Transfer mode to **Garmin**, if applicable (see your unit owner's manual for instructions).

You can receive waypoints, routes, and tracks from your GPS unit.

To receive data from a GPS unit or card reader:

1. If you are using an iQue, synchronize with your personal computer, if necessary, so that you can send information to MapSource.
2. Click **Receive From Device** , or click **Transfer > Receive From Device**. The name of your GPS unit or card reader should appear automatically in the Device menu. If not, click **Find Device**.

- If you are using a USB card programmer, "USB Data Card Programmer" appears in the **Device** field.
 - If you are using a CF or SD card reader, select the correct drive letter from the **Device** field. For example, select "Removable Disk (E:)."
 - If you are using an iQue, select the correct user name from the **Device** field.
3. Under **What to Receive**, check the boxes next to each type of data you want to receive.
 4. Click **Receive**. MapSource begins receiving data from your GPS unit or card reader. The data appears in the corresponding data tabs on the left side of the window.


Creating and Editing Waypoints

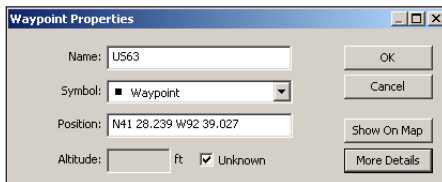
A waypoint is any point on the Graphic Map that you store in memory. Waypoints are also known as “My Locations” or “Favorites” in some GPS Units. You can easily create waypoints in MapSource and then transfer them to your GPS unit. You can also load waypoints from your GPS unit into MapSource and then edit them. To send and receive information from your GPS unit, see [page 12](#).

Creating Waypoints

When you create a waypoint, MapSource automatically names the waypoint based on its location. If you create a waypoint on an existing map feature, MapSource bases the waypoint name on the feature. If you create a waypoint on an open location, MapSource names the waypoint with a number. Each waypoint you create appears in the Waypoints tab on the left side of the window.

To create a waypoint:

1. Click the **Waypoint** tool  or click **Tools > Waypoint**.
2. Locate the place and then click anywhere on the Graphic Map to create a waypoint at that exact spot. To create a waypoint in the center of the Graphic Map, press **Ctrl + W** on your keyboard. The **Waypoint Properties** dialog box appears.




Waypoint Properties dialog box


3. Make changes to the waypoint properties as necessary. Click **More Details** to view all available waypoint properties.
4. Click **OK** to save the waypoint. Click **Cancel** to exit without creating the waypoint.

Editing Waypoints

You can edit the properties of a waypoint by opening the Waypoint Properties dialog box using any of the following methods:

- Double-click a waypoint name listed in the Waypoints tab.
- Click the **Selection** tool . Then double-click a waypoint on the Graphic Map.
- Right-click any waypoint in the Waypoints tab or on the Graphic Map. Then select **Waypoint Properties**.

Finding Places

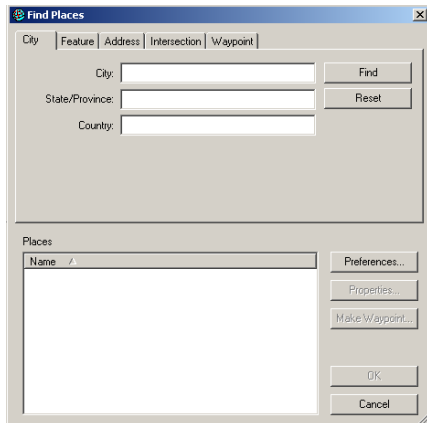
In MapSource, click the **Find** button  to open the Find Places dialog box where you can easily find cities, Points of Interest (such as restaurants, parks, and shops) addresses, intersections, or waypoints.

To have the most available search options from your MapSource product, you must unlock your maps. See “Unlocking Maps,” [page 1](#).

As you type places to search for in the **Find Places** dialog box, MapSource uses an auto-complete list to make suggestions. For example, as you type the name of a city, a list of cities appears matching the letters you type. You can choose the city directly from the auto-complete list or finish typing the name of the city.




NOTE: If the place you are searching for does not appear in the auto-complete list, MapSource will not allow you to continue typing. Verify the correct spelling of the place.




Find Places dialog box

To find a place:

1. Click **Find Places**  or click **Find > Find Places**.
2. Click one of the following tabs: **City**, **Feature**, **Address**, or **Intersection**.
3. Start typing or selecting the search criteria.

4. Click **Find** to show a list of matches in the Places list. If you see the message “No items found,” try using more general search criteria.
5. Click to highlight the correct place from the list. The place appears on the Graphic Map.
6. Click **Make Waypoint** if you want to save the place as a waypoint. Click **OK** to close the Find Places dialog box. Click **Cancel** to close and return to the part of the map you were previously viewing.

Finding Nearest Places and Recently Found Places


In MapSource, click the **Find Nearest Places** button  to open the Find Nearest Places dialog box where you can search for map features and other places near a specific location on the Graphic Map. You can find places near a waypoint, any map location, or the center of the Graphic Map (default).

Click **Recently Found Places**  to open the Recently Found Places dialog box where you can view a list of places you have searched for recently.

Creating and Editing Routes

Routes tell you how to get from one place to another. Depending on your MapSource product, you can create a direct route (a straight-line route), or an auto-route (turn-by-turn over roads).


Creating Routes

You can create and modify routes in MapSource by using the **Route Properties** dialog box, the **Route** tool , or the Waypoints tab. A route can contain several points; each point is called a *via point*.



NOTE: Not all MapSource products can create an auto-route. You must be using a routable MapSource product for MapSource to calculate an auto-route.

To create a route using the Route Properties dialog box:

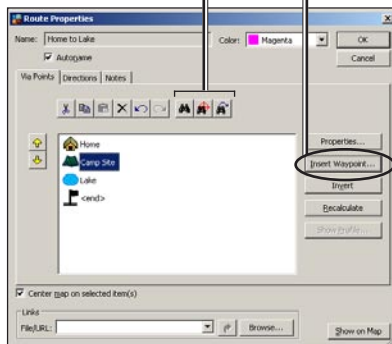
1. Press **Ctrl + R** or click **Edit > New Route** to open the Route Properties dialog box.
2. To add a city, point of interest, address, or intersection, click the **Find Places** button  inside the dialog box.
3. If you have previously created waypoints and want to add them the route, click **Insert Waypoint**. Select the waypoint from the list that appears. To select multiple waypoints, press the **Ctrl** or **Shift** key while you click several waypoints. Then click **OK**.
4. Repeat steps 2–3 until you are finished adding points to your route. Each point you add is listed in order from first to last under the Via Points tab.
5. To rearrange the points in the list, highlight each point and click the arrows to move the point up or down in the list. To reorder the points from last to first, click **Invert**.

To view a point on the map, highlight the point and click **Show on Map**. You can also check the box next to **Center map on selected item** to see a selected point in the center of the map.

6. Click **OK** to save the new route.

Click Find buttons to search for map features.

Click to insert a waypoint listed in the Waypoints tab.



Route Properties dialog box

Editing Routes

You can edit routes directly on the Graphic Map or using the Route Properties dialog box.

From your route on the Graphic Map, you can add, move, and remove waypoints using the selection tool



Moving a route waypoint on the Graphic Map.

From the Route Properties dialog box, you can:

- Add points to a route
- Rename a route
- Invert a route
- Link a file or URL to a route
- View a vertical profile for a route
- View and print text directions for an auto-route
- Delete a route

For more information, refer to the MapSource Help system. Click **Help > MapSource Help** or press **F1** on your keyboard to open the detailed MapSource Help files.

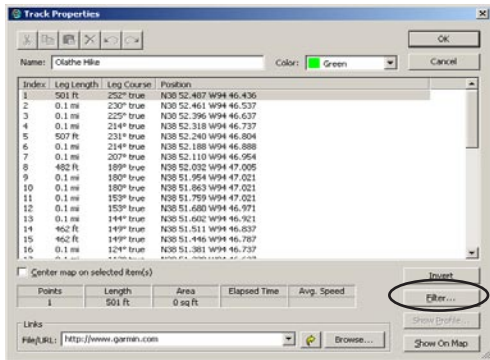
Tracks

Tracks are trails on the Graphic Map that show exactly where you have been. The track appears as a tiny dotted line made up of track points. As you move, your GPS unit records a track point every second (by default) with the time and your position and speed. Your GPS unit then saves these points as a track.

Viewing Tracks

Tracks received from your GPS unit appear in the Tracks tab after you receive them. You can view tracks on the Graphic Map and edit them using the Track Properties dialog box.

Double-click any track in the Tracks tab to open the Track Properties dialog box. You can change the track name and color, invert the track, view a vertical profile of the track, and view and edit track points. For more information, see “Transferring MapSource Data” on [page 12](#).



Track Properties dialog box

Filtering Tracks

Each track point contains time, position, and speed information. From the Track Properties dialog box, click **Filter**. When you filter a track you have loaded from your GPS unit, you tell MapSource which track points you want to keep and which to discard. You can filter track points by time or distance, or you can let MapSource filter the track points automatically.

Customizing MapSource

After you become comfortable using MapSource, you may want to customize preferences to meet your needs. You can change many settings by opening MapSource Preferences. Click **Edit > Preferences** to open the Preferences dialog box.

About Google Earth™

With Google Earth installed on your computer, you can view waypoints, tracks, and routes saved in MapSource. Select an item in the data tabs and then select **View > View in Google Earth**.

Go to <http://earth.google.com> to download the Google Earth application.

WARNINGS AND CAUTIONS

CAUTION: GARMIN MAKES NO WARRANTY AS TO THE ACCURACY OR COMPLETENESS OF THE MAP DATA IN THIS PRODUCT AND DISCLAIMS ANY AND ALL EXPRESS, IMPLIED, OR STATUTORY WARRANTIES, INCLUDING ANY IMPLIED WARRANTY OF MERCHANTABILITY OR FITNESS FOR A PARTICULAR PURPOSE. IT IS THE USER'S RESPONSIBILITY TO USE THIS PRODUCT PRUDENTLY. THIS PRODUCT IS INTENDED TO BE USED ONLY AS A TRAVEL AID AND MUST NOT BE USED FOR ANY PURPOSE REQUIRING PRECISE MEASUREMENT OF DIRECTION, DISTANCE, LOCATION, OR TOPOGRAPHY.

The following Warnings and Cautions may apply to some or all of the content in the MapSource BlueChart® installation disk:

WARNING: No National Hydrographic Office has verified the information in this product and none accept liability for the accuracy of reproduction or any modifications made thereafter. No National Hydrographic Office warrants that this product satisfies national or international regulations regarding the use of the appropriate products for navigation.

WARNING: This product has been produced, in part or whole, from the United Kingdom Hydrographic Office products. No liability is accepted for the use of this product and it must not be used to assist in navigation. The digital chart(s) contained herein have not been verified or updated. For your safety, users are advised to consult official updated nautical charts for navigational purposes. The Hydrographic Office has not verified the extracted data and the printed chart should be consulted for full navigational details.

CAUTION: The Australian Hydrographic Office does not check the information on this product and the Commonwealth accepts no liability for the accuracy of copying or for any modifications that may have been made to the information which it has supplied. Furthermore, the Commonwealth does not warrant that this product meets any regulations as an appropriate product for navigation or that it contains the latest hydrographic information available.

WARNING: The external boundaries of India as depicted in map(s) are neither correct nor authentic. Other external boundaries as depicted in the map(s) may neither be correct nor authentic.

INDEX

- A**
Auto-Routing 10, 19
- B**
BlueChart
 selecting maps 10
- C**
Card Reader 12, 14
Cartography ii
Cautions and Warnings 23
cf Que Users 14
Compact Flash (CF) Card
 12, 14
Connecting Your GPS to a
 Computer 6
Contact Garmin ii
Coupon Code 1, 2–3
Customizing MapSource 22
- D**
Data Card 12
Data Tabs 8
Data Transfer Mode 14
- F**
Favorites 16
Finding Nearest Places 18
Finding Places 17
Finding Recently Found Places
 18
- G**
Google Earth 22
GPS Unit
 connecting to a computer
 6
 loading maps to 9
Graphic Map 8
- H**
Help Files i
- I**
Installing MapSource
 modifying 5
 removing 6
iQue Users 12, 14, 15
- L**
Loading Maps to Your GPS 9
 compatibility 9
 deselecting maps 10
- from multiple MapSource
 products 11
 selecting maps 9
 sending maps 14
 tutorial 9
- M**
Maps Tab 10
Map Set 10
Map Tool 9
MiniMap 8
Modifying MapSource 5
Modify Coverage Areas 5
My Locations 16
- P**
Points of Interest (POI) 17
 reloading database 13
Pre-programmed Data Cards
 13
- R**
Receive From Device 15
Receiving Data 15
Registering Your Product 4
Removing Mapsource 6
Repairing MapSource 5
Routes 19–24
 creating 19
 editing 20
 inverting 19
 selecting maps around 11
Route Properties 19
- S**
Saving Files 16
Secure Digital (SD) Card 12,
 14
Selecting Maps 9
 around routes, waypoints,
 and tracks 11
Selection Tool 17
Sending Data 14
Send To Device 14
Serial Number ii
Serial Port 6
Splitter Bar 8
Status Bar 8
Storage Card 12
- T**
Toolbars 8
Tracks
 filtering 22
 selecting maps around 11
 viewing 22

- Transferring Data 12
 - receiving data 15
 - sending data 13
 - transfer methods 12

U

- Uninstalling MapSource 6
- Unlock Certificate 1, 3
- Unlock Code 1, 2
 - retrieving 4
 - viewing 3
- Unlocking Maps 1
- USB Data Card Programmer
 - 12, 14, 15
- USB Port 7

W

- Warnings and Cautions 23
- Waypoints 16–19
 - adding to routes 19–23
 - creating 16
 - editing 17
 - selecting maps around
 - 11–15
- Waypoints Tab 16
- Waypoint Properties 16

For the latest free software updates (excluding map data) throughout the life of your Garmin products, visit the Garmin Web site at www.garmin.com.



© 2008 Garmin Ltd. or its subsidiaries

Garmin International, Inc.
1200 East 151st Street, Olathe, Kansas 66062, USA

Garmin (Europe) Ltd.
Liberty House, Hounslow Business Park, Southampton, Hampshire, SO40 9RB UK

Garmin Corporation
No. 68, Jangshu 2nd Road, Shijr, Taipei County, Taiwan

www.garmin.com

Part Number 190-00417-20 Rev. F